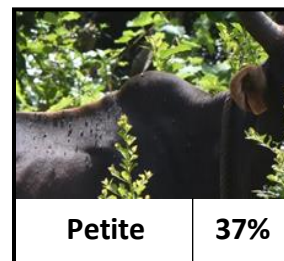
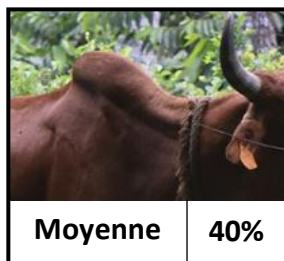
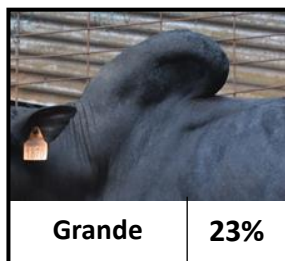


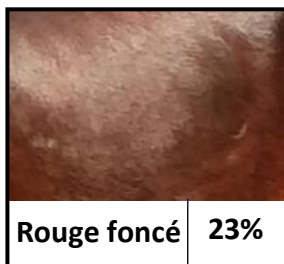
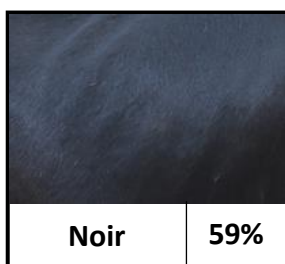
# Le zébu mahorais : caractéristiques de la race

## FICHE RESULTATS

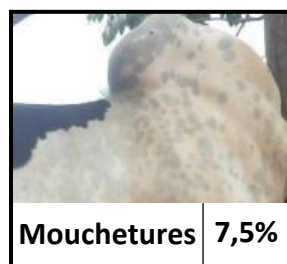
### Taille de la bosse



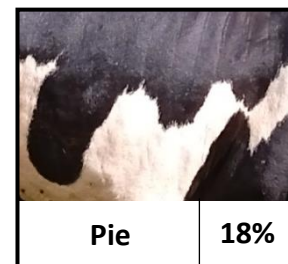
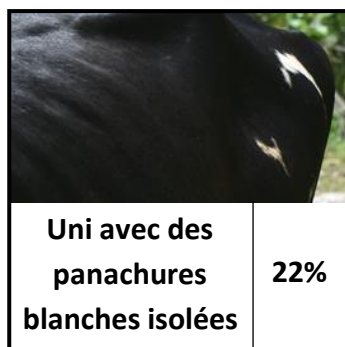
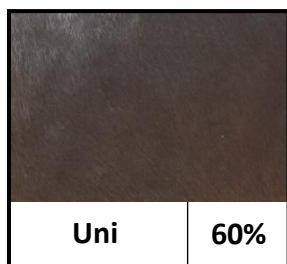
### Couleur principale de la robe



### Particularité de la robe

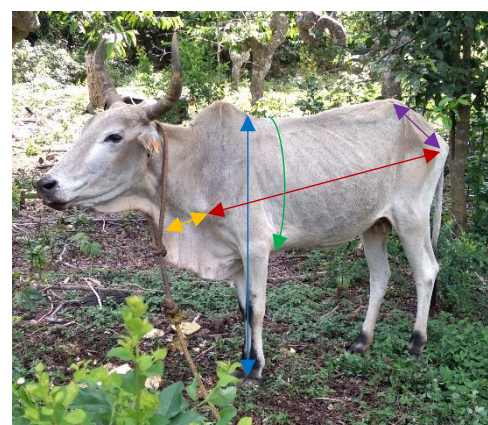


## Motif de robe

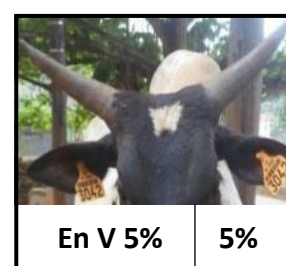


## Dimension du corps

Dimensions	Moyenne	Minimum	Maximum
Hauteur au garrot	106	90 cm	126 cm
Longueur scapulo-ischiale	118 cm	92 cm	143 cm
Périmètre thoracique	139 cm	109 cm	165 cm
Largeur de poitrine	34 cm	18 cm	56 cm
Longueur de bassin	39 cm	19 cm	48 cm



## Forme des cornes



Autres formes de cornes : 3% des animaux

Conception : Cirad, Audrey Rozier, septembre 2022 - © photos : J.Vayssières, A.Rozier, J.Magnier, M.Ouvrard